



Corporate Social Responsibility (CSR) and the interrelatedness of Decent Work and Human Rights

Working Conference

1st-2nd September 2009
Palais Strudlhof, Vienna

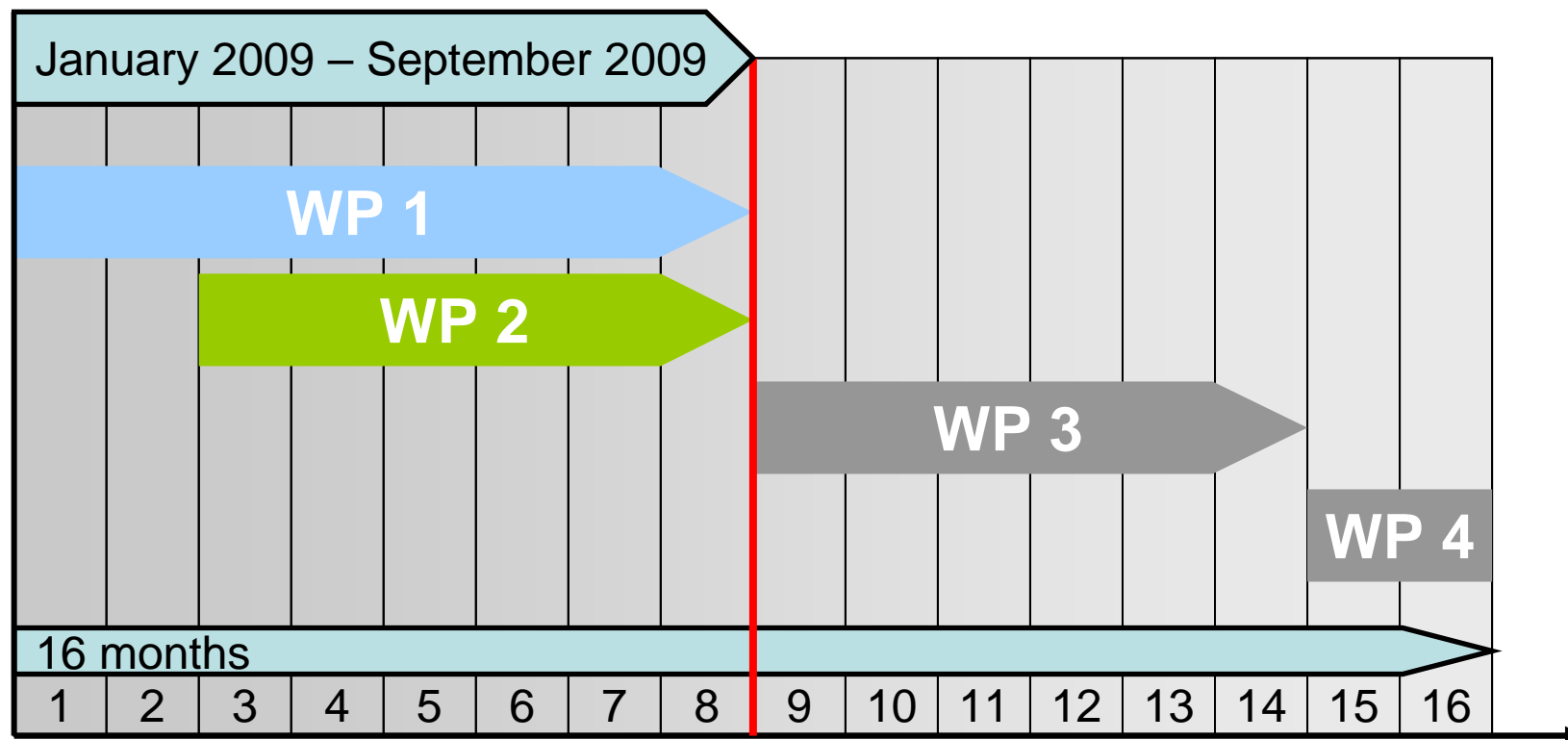


Ludwig Boltzmann Institute
Human Rights

Barbara Linder & Astrid Steinkellner

The **LARRGE** Timeline

Labour - Rights - Responsibilities - Guide

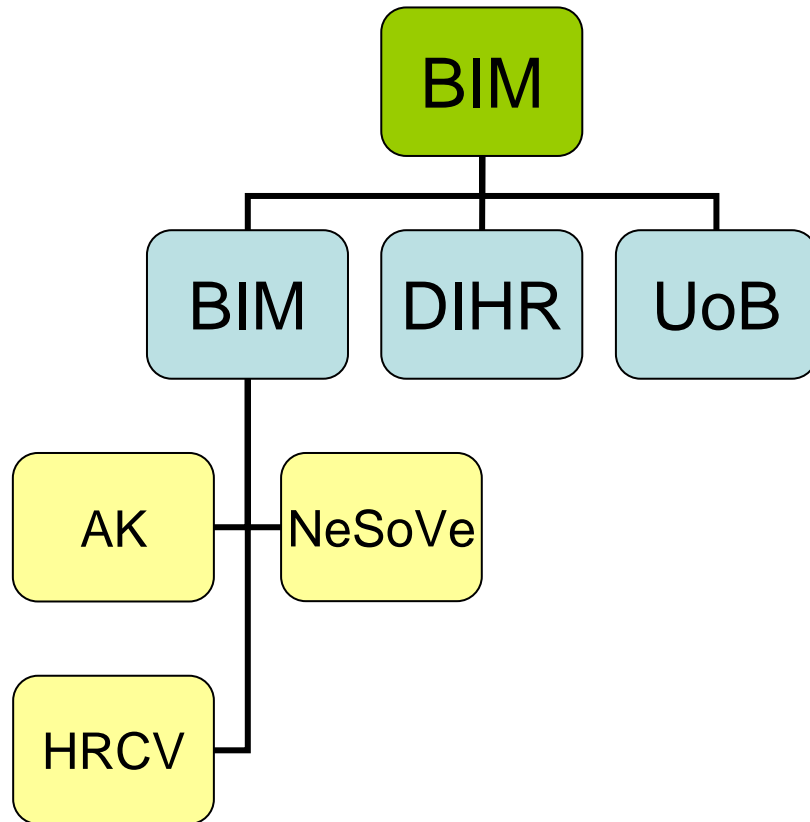


Ludwig Boltzmann Institute
Human Rights

Barbara Linder & Astrid Steinkellner

The **LARRGE** Team

Labour - Rights - Responsibilities - Guide



Ludwig Boltzmann Institute
Human Rights

Barbara Linder & Astrid Steinkellner

➤ Coordination:

- Ludwig Boltzmann Institute of Human Rights (BIM)

➤ Implementation:

- **Manfred Nowak, Barbara Linder, Karin Lukas, Astrid Steinkellner** (BIM)
- **Tom Sorell** (Centre for the Study of Global Ethics, University of Birmingham)
- **Mike Baab, Claire O'Brien** (Danish Institute for Human Rights (DIHR))

➤ Support:

- Austrian Chamber of Labour (AK)
- Network Social Responsibility (NeSoVe)
- Human Rights Consulting Vienna (HRCV)

The **LARRGE** Project

Labour - Rights - Responsibilities - Guide

➤ Funding

- EU Commission- EU **PROGRESS** Program for employment and social solidarity
- Austrian Federal Ministry of Labour, Social Affairs and Consumer Protection
- Austrian Federal Ministry of Economy, Family and Youth

➤ Focus

- **DECENT WORK**



Ludwig Boltzmann Institute
Human Rights

Barbara Linder & Astrid Steinkellner

The **LARRGE** Objective

Labour - Rights - Responsibilities - Guide

- Assess the **impact of CSR Tools** on Human and Labour Rights in business practice



Ludwig Boltzmann Institute
Human Rights

Barbara Linder & Astrid Steinkellner

The **LARRGE** Framework for Analysis

Labour - Rights - Responsibilities - Guide

1. Reference to **Human Rights** and **Core Labour Standards**
2. Reference to the specific **responsibility** of a company operating in a given country
3. **Function** of the tool
4. **Practicability**



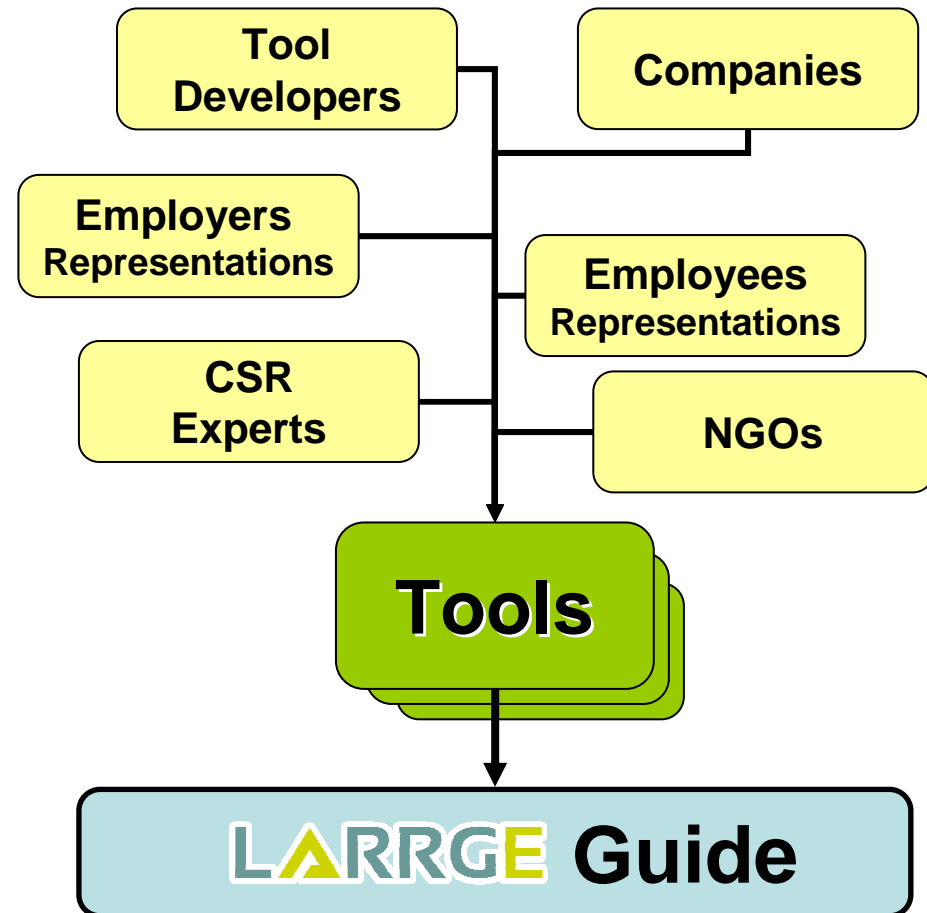
Ludwig Boltzmann Institute
Human Rights

Barbara Linder & Astrid Steinkellner

The **LARRGE** Guide

Labour - Rights - Responsibilities - Guide

- Elaborate the **Labour Rights Responsibilities Guide** on CSR tools in the field of Human Rights and Core Labour Standards

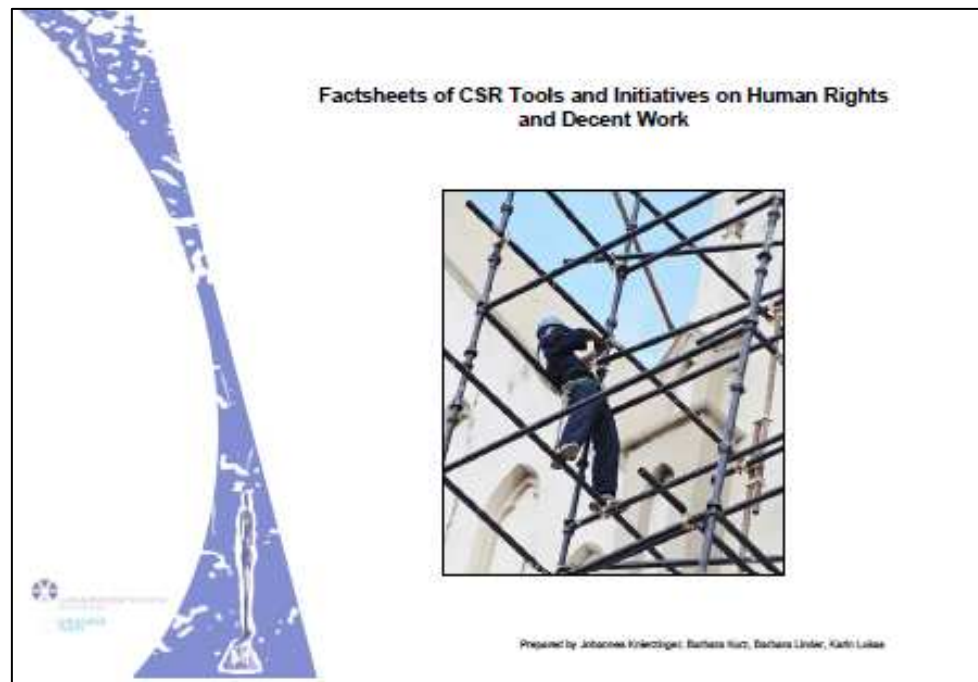


The **LARRGE** Research

Labour - Rights - Responsibilities - Guide

➤ Identification of **CSR Tools** on Human Rights and Core Labour Standards

- Key data
- Aim of the tool
- Function of the tool
- Target group
- Scope of the tool:
 - Human Rights
 - Labour Rights



Ludwig Boltzmann Institute
Human Rights

Barbara Linder & Astrid Steinkellner

The **LARRGE** Website

Labour - Rights - Responsibilities - Guide

www.larrge.eu

Project

Guide

Team

Events

Survey

Dialogue

Links

“ Multinational corporations today operate seamlessly across national boundaries. But the way in which the human rights and environmental impacts of major companies are governed is *far from seamless* ”

- Mary Robinson

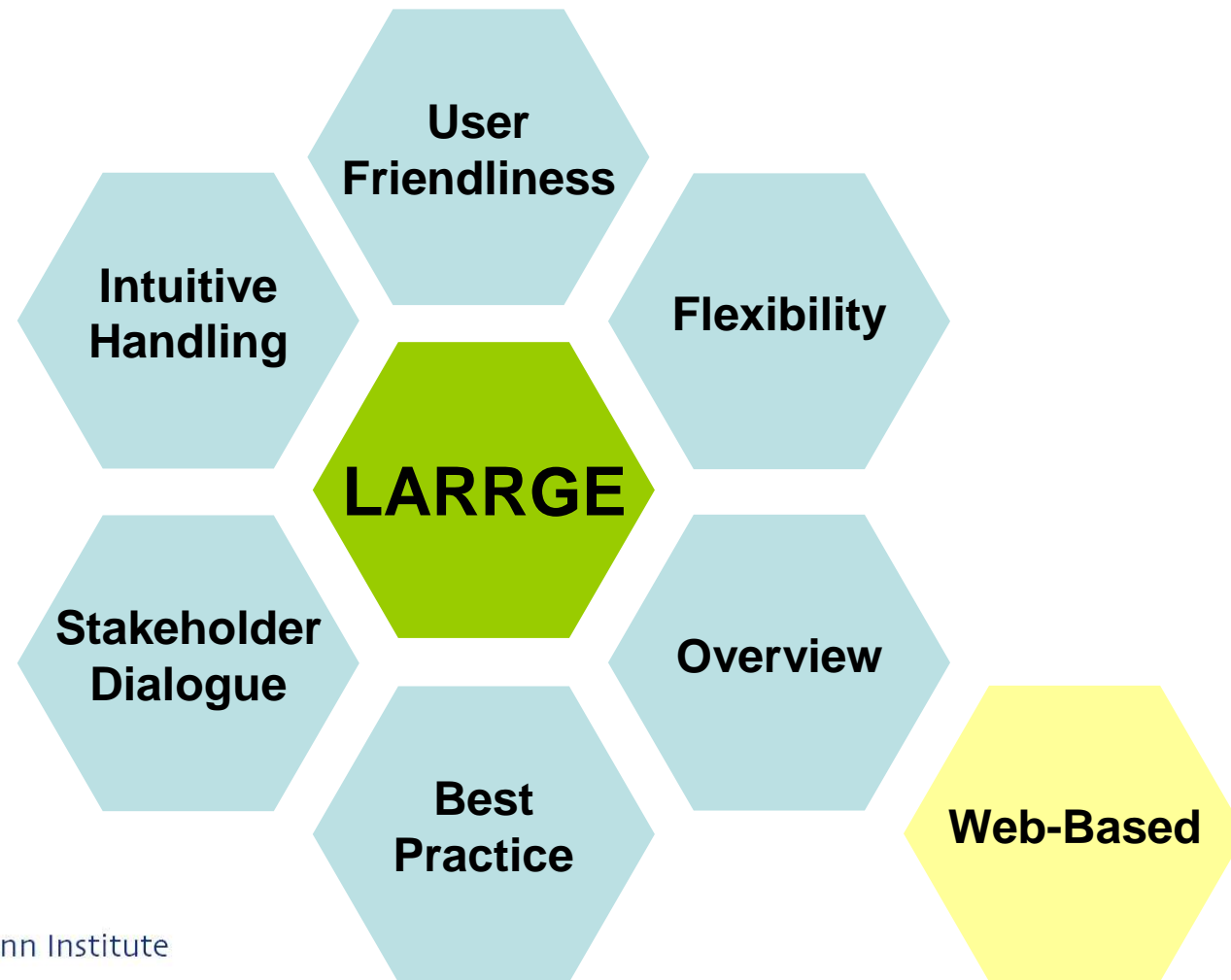


Ludwig Boltzmann Institute
Human Rights

Barbara Linder & Astrid Steinkellner

The **LARRGE** Idea

Labour - Rights - Responsibilities - Guide

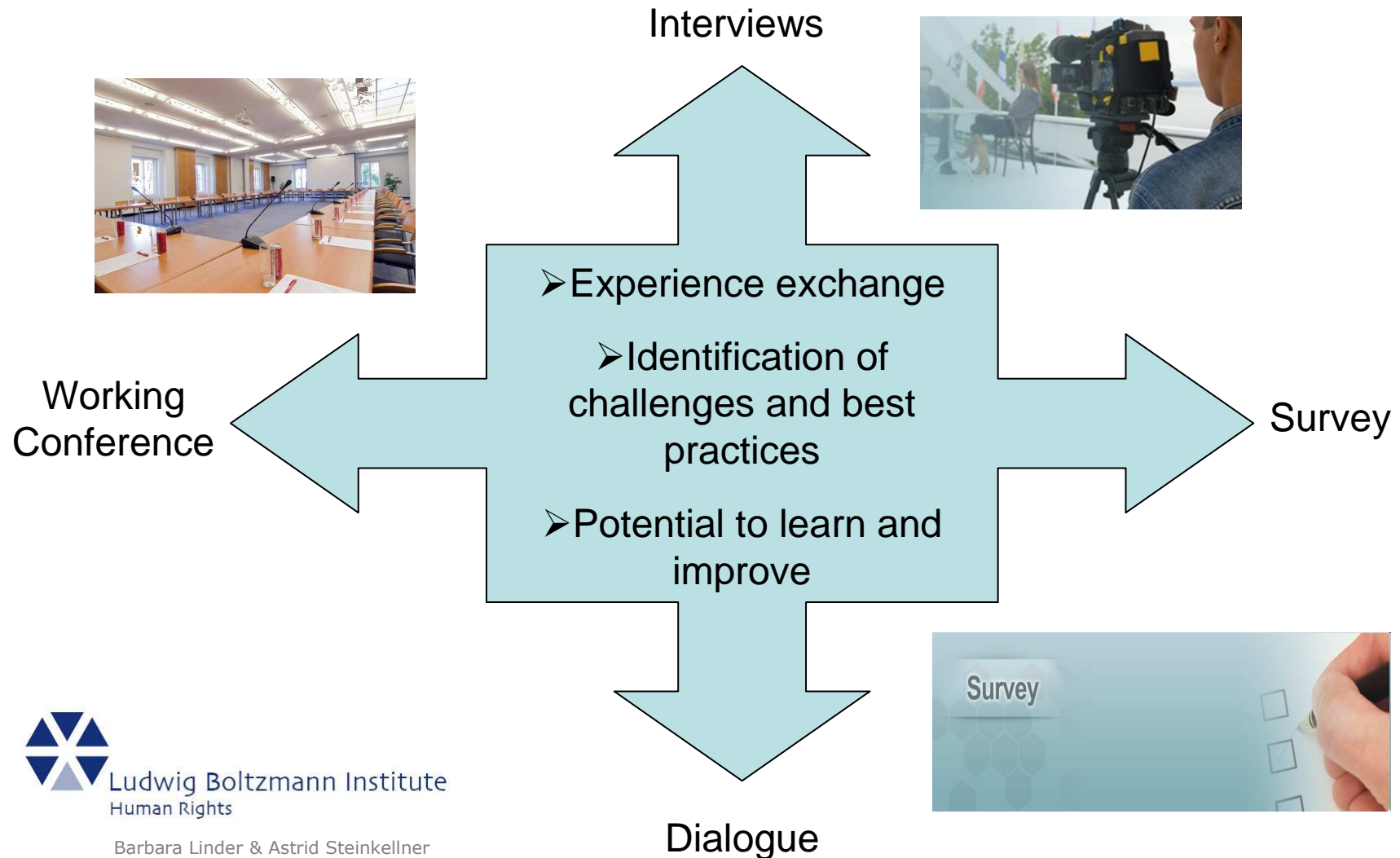


Ludwig Boltzmann Institute
Human Rights

Barbara Linder & Astrid Steinkellner

The **LARRGE** Stakeholder Dialogue

Labour - Rights - Responsibilities - Guide



The **LARRGE** Survey

Labour - Rights - Responsibilities - Guide

- Online questionnaires
 - Companies
 - NGOs/Civil Society Organisations
- Starting 09/2009
- Reference as contributor or even best practice
- Absolute confidentiality



The screenshot shows the LARRGE Survey web application. At the top, there is a navigation bar with the LARRGE logo and the text 'Labour - Rights - Responsibilities - Guide'. The navigation bar includes links for Project, Guide, Team, Events, Survey (highlighted), Dialogue, and Links. Below the navigation bar, there is a large banner image with the word 'Survey' and a hand filling out a form. The main content area is titled 'COMPANY' and contains a form for 'I. COMPANY INFORMATION'. The form has two sections: '1. Name of company:' with a text input field, and '2. Sector' with four radio button options: Primary (agriculture, fisheries), Secondary (industry, extractive), Tertiary (services), and Public sector. The page number 'Page 1 of 3' is visible in the bottom right corner.



Ludwig Boltzmann Institute
Human Rights

Barbara Linder & Astrid Steinkellner

The **LARRGE** Outlook

Labour - Rights - Responsibilities - Guide



As of **spring 2010** on www.larrge.eu!

Thank you for your attention!



Enjoy your lunch!



Ludwig Boltzmann Institute
Human Rights

Barbara Linder & Astrid Steinkellner